



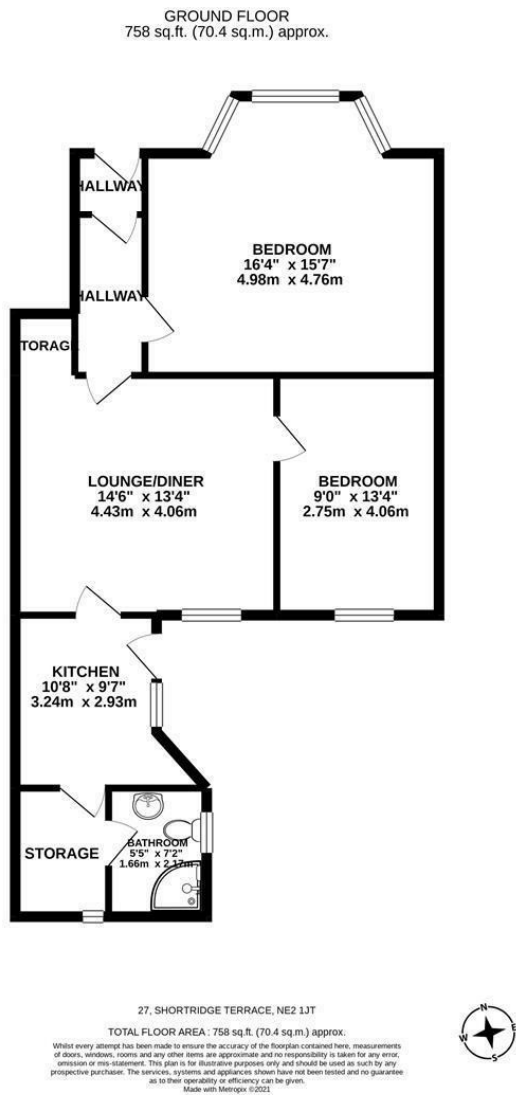
27 Shortridge Terrace, Newcastle Upon Tyne, NE2 2JE

Offers Over £200,000

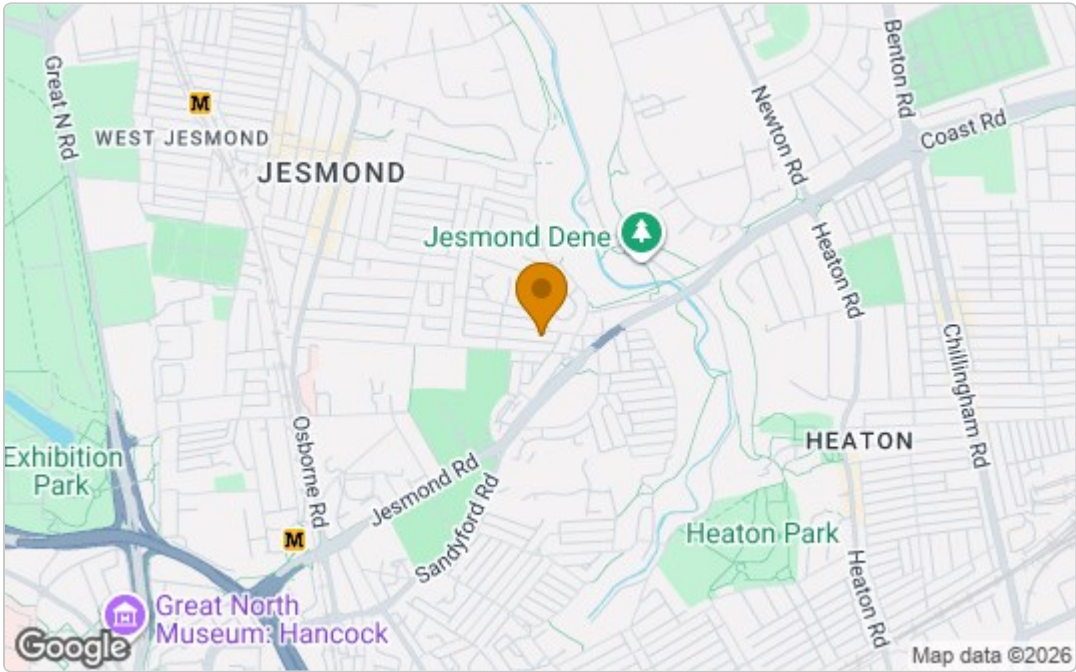
Hive Estates welcomes to the market this immaculately renovated two bedroom ground floor flat in Jesmond. This home has been thoughtfully designed and decorated throughout with contemporary styling whilst retaining its period Victorian features. Located close to Jesmond Dene, it is a short walk from the vibrant Osborne Road providing a variety of local amenities.



Floor Plan



Area Map



These particulars, whilst believed to be accurate are set out as a general outline only for guidance and do not constitute any part of an offer or contract. Intending purchasers should not rely on them as statements of representation of fact, but must satisfy themselves by inspection or otherwise as to their accuracy. No person in this firms employment has the authority to make or give any representation or warranty in respect of the property.

Energy Efficiency Graph

